

ARCHITECTURAL PORTFOLIO



120, Udyog Bhavan, Sonawala Lane, Goregaon (East),
Mumbai – 400 063, Maharashtra, India
Phone Number: +91 22 6723 7000 www.hosmac.com

Index

01. Alexis Hospital, Nagpur	04
02. Asian Heart Institute, Mumbai	06
03. Ashoka Medicovert Hospital, Nashik	08
04. Believer's Church Hospital, Kerala	10
05. Bhagwan Mahavir Hospital, Bangalore	12
06. Emirates Hospital, Dubai	14
07. Excelcare Hospital, Guwahati	16
08. ILS Hospital, Agartala	18
09. Narayana Health Hospital, Gurugram	20
10. Paras JK Hospital, Udaipur	22
11. Prime Hospital, Dubai	24
12. Thumbay University Hospital, Ajman	26

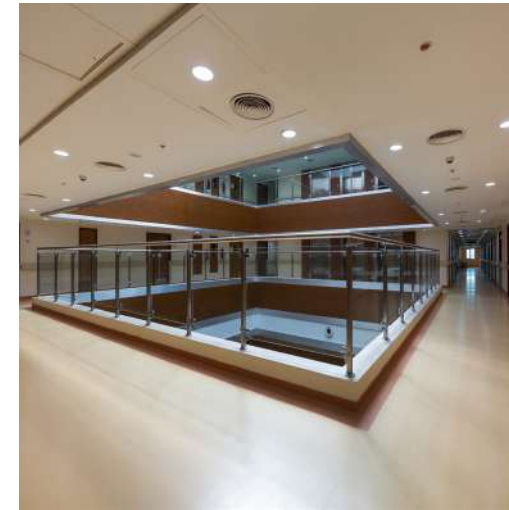
"An apple a day keeps the doctor away"- if only staying healthy was that simple. The reality is that in future the demands of doctors and healthcare will increase. That's because population is growing older. Doctors are in short supply and systems are feeling in strain. Its clear that healthcare must become much more efficient if everyone is going to get the services they need. Medicine will have to become Smart Medicine. Artificial intelligence and 3D imaging are just two cutting edge technologies that can help doctors work faster and more effectively. We can generate huge savings in the area of paperless data, online interaction, decision support, automated processes, and patient self-service. All this change means business opportunity. But never fear, technology will assist physicians, not replace them & apples are still good for you.

Life-saving equipments, cutting-edge technology, patient comfort and staff wellbeing, are all now integral considerations in modern healthcare design. Life often begins and ends in a Hospital. Hospitals & Professionals play a role in making this "Journey through life" as bearable and healthy as possible. Medical Technology & Competence alone cannot put patients back on their feet; as they say the doctor "Helps" but the nature "Heals". At Hosmac, we believe that Environment thus becomes equally important & Architecture can definitely "Heal". Patient is no longer transported & delivered for repair like a "defective motor", but we tend to design and create environments that provide positive effect on healing and create a "Therapeutic environment". What we observe currently is a significant paradigm shift in the way we think about the world around us and should shape the way we design hospitals of future. We at Hosmac are all geared up to cater for a new Post Pandemic Healthcare Design.

Presenting few of Hosmac's selected projects and sharing with you in the following pages.



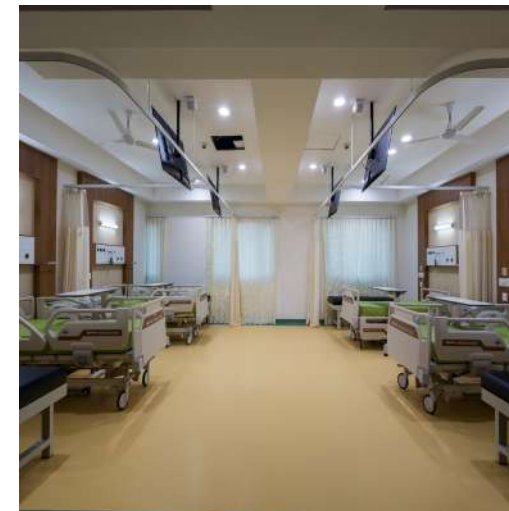
Dr. Vivek Desai
Founder & Managing Director
HOSMAC
98201 38685
vivek.desai@hosmac.com



Top Left
Central Atrium to bring in natural Day light



Top Right
Corridor with smart & bright furniture and flooring



Bottom Left
Patient ward with bright pastel finishes



Bottom Right
A contemporary design of the nursing station

1. Alexis Hospital

Location
Nagpur, India

Beds
200

Plot Area
73,000 Sq.Ft

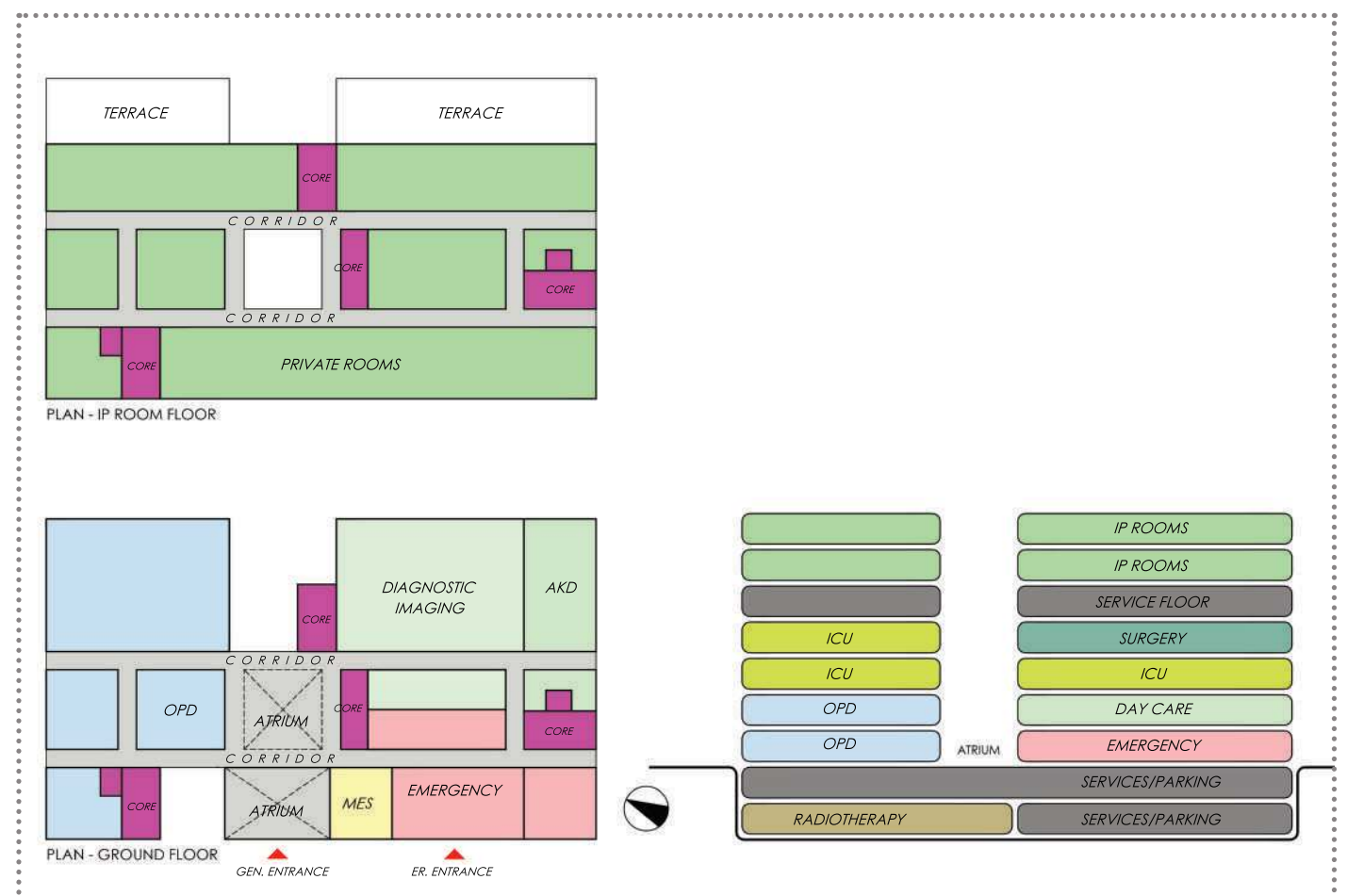
BUA
2,20,000 Sq.Ft

Cost
85 Cr INR (2016)

Floors
9 (2B+G+6)

The project is a best example of how a compact super-speciality Hospital can be efficiently planned. The rectangular floor plate at lower level has 8 x 5 grids network providing a sufficient floor plate for larger spreaded functions while it gets reduced to optimal 8 x 4 grids network at Inpatient Room floor and thus creating a grid full of open to sky terrace garden for suites and single rooms. A special inviting feature is a 4 floor high Atrium that greets the visitor the moment he steps inside the Hospital giving a very enhanced spatial quality. A dedicated alcove is carved out in

the building for Ambulance parking which also breaks positively the building mass at lower level. Ground floor constitutes of OPD, Radiology, Emergency and Daycare. First floor houses OPD, Dialysis, Admin, Kitchen & Dining. Second Floor has Maternity, NICU, MICU, Labs, Blood Bank and also an IVF. On Third Floor Surgery is planned along with Cath Lab and SICU. CSSD is also kept on this floor. Fourth floor is designed as a service floor housing AHUs of Surgery, Cath, ICU of lower floors. Fifth & Sixth are Inpatient Room Floors where at Fifth floor Terrace Garden is created.

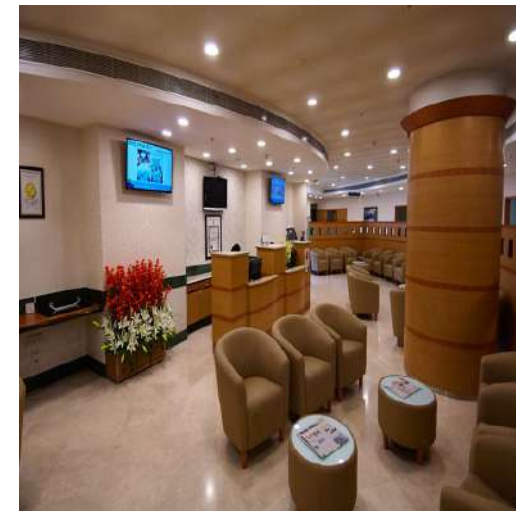




Top Left
Lobby huge and inviting
with strong geometrical
form



Top Right
State of the art OT to
cater to the complex
surgeries



Bottom Left
OPD waiting the
curvature forms make it
a cosy space



Bottom Right
Private Patient Room
with warm finishes and
colors

2. Asian Heart Institute

Location
Mumbai, India

Beds
250

Plot Area
1,06,700 Sq.Ft

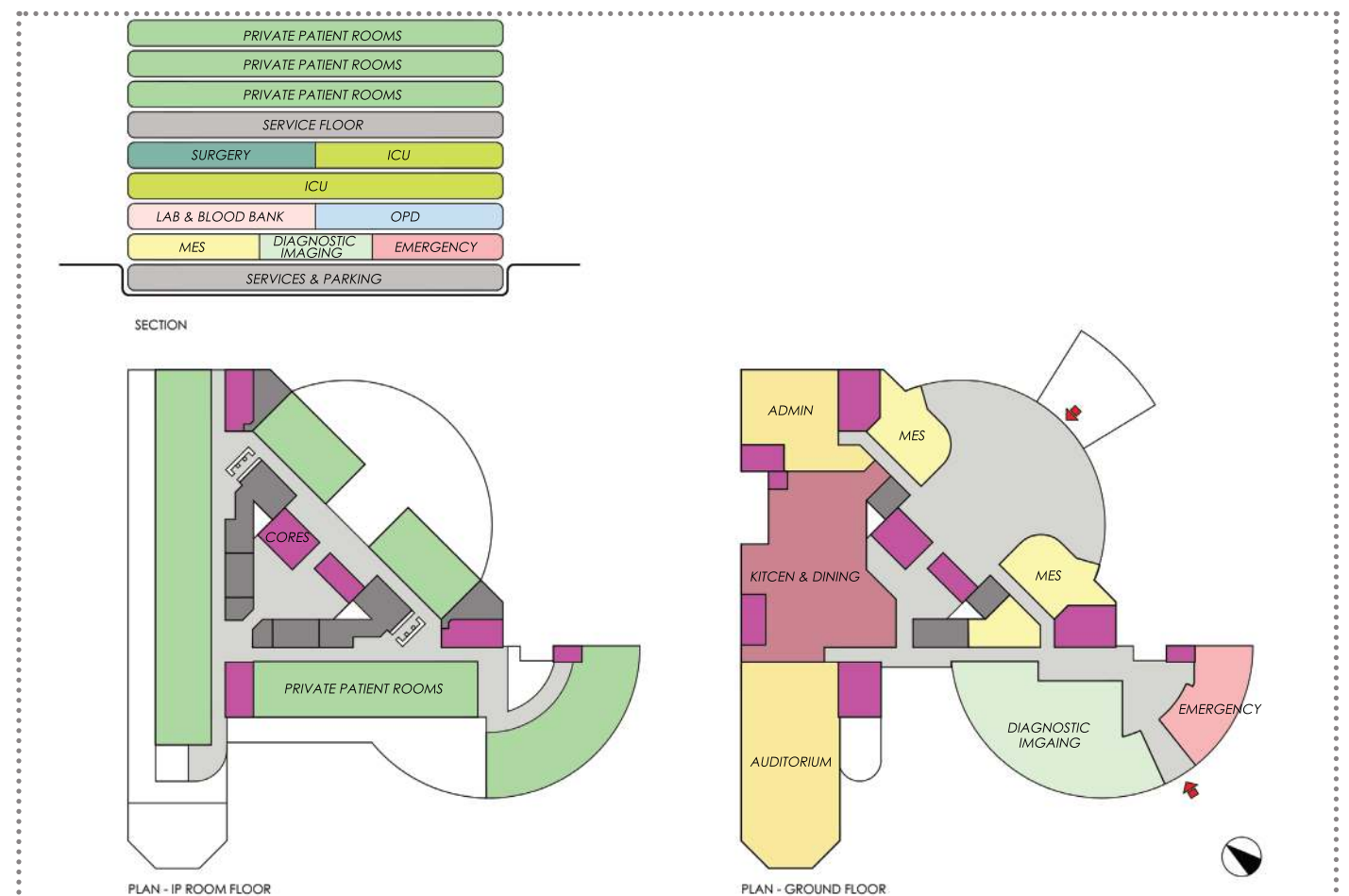
BUA
3,50,000 Sq.Ft

Cost
150 Cr INR (2002)

Floors
9 (B+G+7)

Asian Heart Institute (AHI), is a cardiac care hospital, established in 2002, located in the western suburb of Bandra, at the Bandra-Kurla Complex (BKC), in Mumbai, Maharashtra, India. The floor plate is a combination of strong geometrical form of triangles and curves designed in an irregular shaped plot. It's a 250 bed hospital spreaded across 9 floors where basement is used for services and parking, ER, Diagnosis, Cafeteria & an auditorium on Ground Floor. First floor has OPD, Labs and Blood Bank. The second floor is an ICU floor. Third floor has Surgery

and ICU. Fourth floor has AHUs and other necessary services and support functions. The top 3 floors house patient rooms. The triangular center where the lift core along with utilities like toilets, cu, du are placed is truly unique design.





Top Left
Inviting Lobby, glazed to take in natural light



Top Right
ICU with ceiling mounted curtains & vinyl flooring



Bottom Left
MRI with engaging ceiling light



Bottom Right
Private patient room with wooden & vinyl finishes

3. Ashokha Medicover Hospital

Location
Nashik, India

Beds
300

Plot Area
3,10,000 Sq.Ft

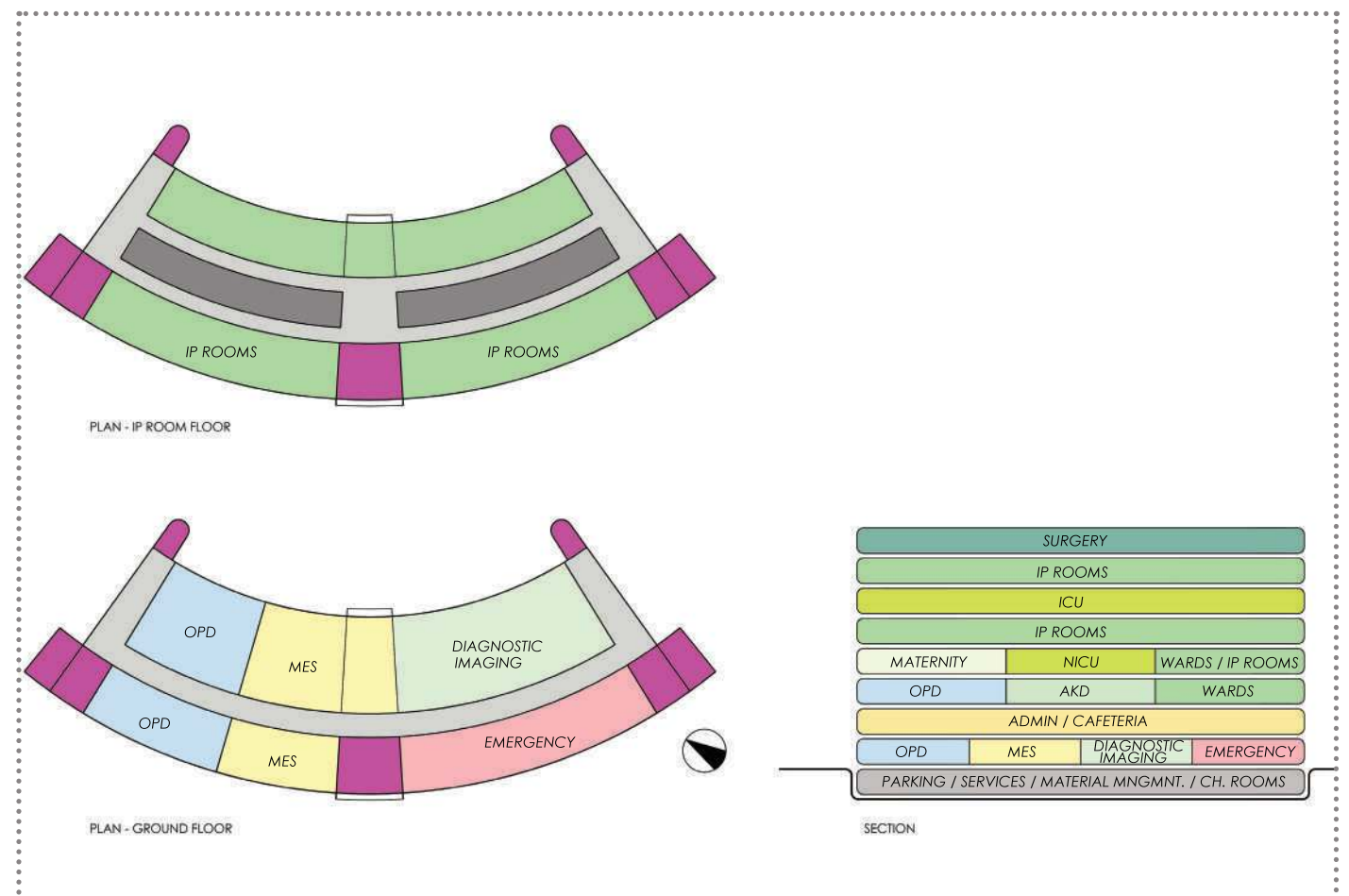
BUA
2,80,000 Sq.Ft

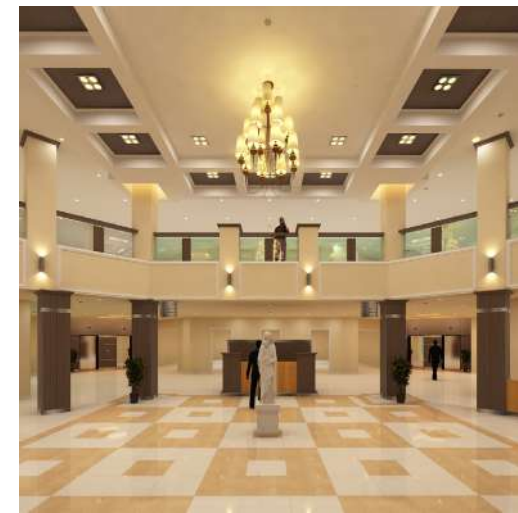
Cost
120 Cr INR (2018)

Floors
9 (B+G+7)

The project is unique and a perfect example of change of use. The building footprint is originally designed for an office typology where a hospital is metamorphosed spanning basement, Ground and 7 floors. Even the floor heights were meant for commercial purpose. So the big decision was to place surgery and cath lab at topmost floor. Doing so implied dual benefits of using the above terrace to place the required AHUs and also slabs over OTs and Cath Labs were raised for provision of AHU ducts. Realizing the need for an international standard,

comprehensive services hospital in Nashik, Ashoka Group had partnered Medicover, a highly respected European healthcare brand, to bring transparent, world-class healthcare within the reach of everyone – Ashoka Medicover Hospitals. People from Nashik and neighbouring areas can now avail affordable and high-quality medical treatment instead of going to Mumbai. The largest and the most advanced super-specialty hospital in north Maharashtra, Ashoka Medicover Hospitals offers clinical expertise, latest technology and comprehensive patient care.





Top Left
Lobby with Double height space creates a grandeur and welcomes the visitors

Top Right
Operation Theatre with ceiling suspended essentials to keep the floor clean

Bottom Left
Pediatric ward for girls

Bottom Right
Pediatric Ward for boys

4. Believer's Church Hospital

Location
Kerala, India

Beds
800

Plot Area
30 Acre

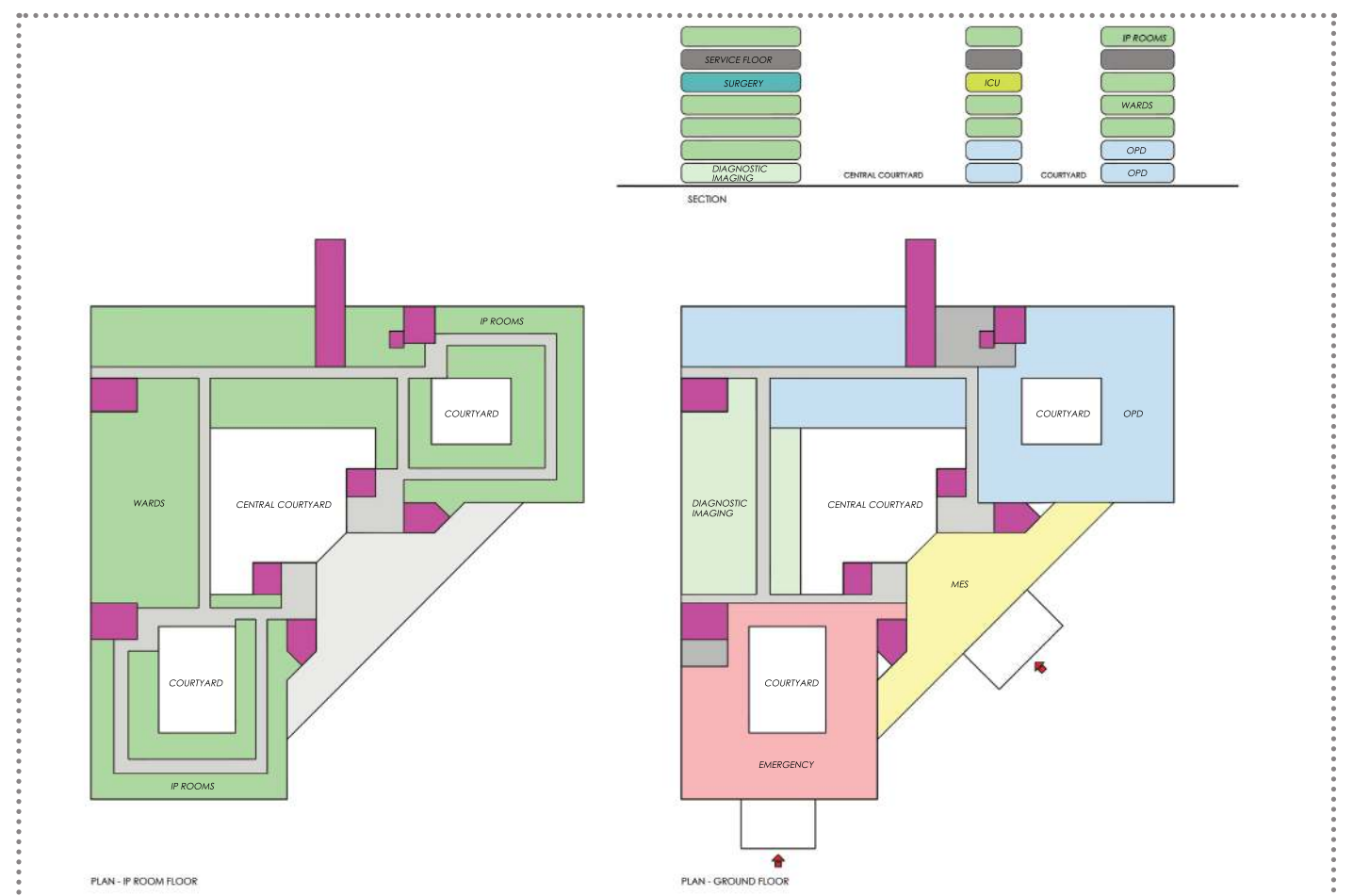
BUA (hospital)
5,00,000 Sq.Ft

Cost
250 Cr INR (2016)
(For Entire Campus)

Floors
7 (G+6)

Believers Church Medical College Hospital, located in the serene outskirts of Kerala in Thiruvalla town, is a harmonious blend of spiritual aesthetics and modern medicine. Blend of red brick exterior with white colored glass reinforced concrete gives the hospital building a look of tranquil home for healing. Taking shape over 30 acres of Land. Amidst lush green neighborhood of Thiruvalla – is a stylish Medical College cum Hospital Complex that shall be operated by Believer's Church India. A land ad measuring 100 acres on the other side of the road

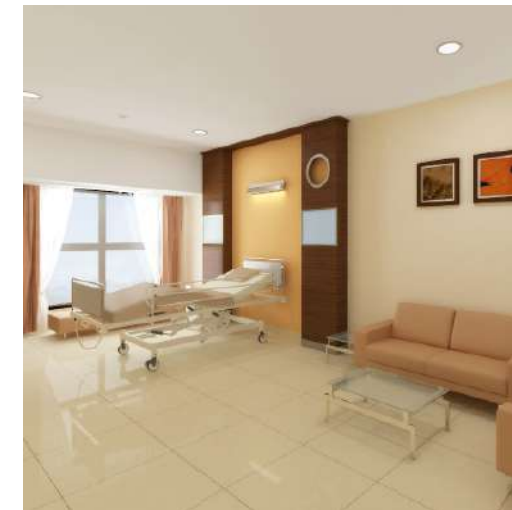
accommodates a Residential school starting with Preschool to Seminary, yet maintains a campus of serenity, discipline and humbleness. The design brief was to enhance the design elements of this campus and bring out a unique character for the new complex. This vision of the Client was captured by designing structures of Exposed Brickwork, Arches and Blustered Railings, Sloping Roof with Gable end, Stained Glass, etc. resembled Contemporary North American / European Looks. A jogging track is a special feature enveloping an artificial lake.





Top Left
Pergola overhang for as an iconic style for the hospital. The corner edge becomes an interesting detail to help reduce mass scale

Top Right
Lift Lobby with high quality tiles and laminate finishes



Bottom Left
Patient Room with bed facing large windows



Bottom Right
Central Atrium to bring in natural Day light. A Mahavir sculpture is placed in this atrium

5. Bhagwan Mahaveer Jain Hospital

Location
Banglore, India

Beds
250

Plot Area
1,75,000 Sq.Ft

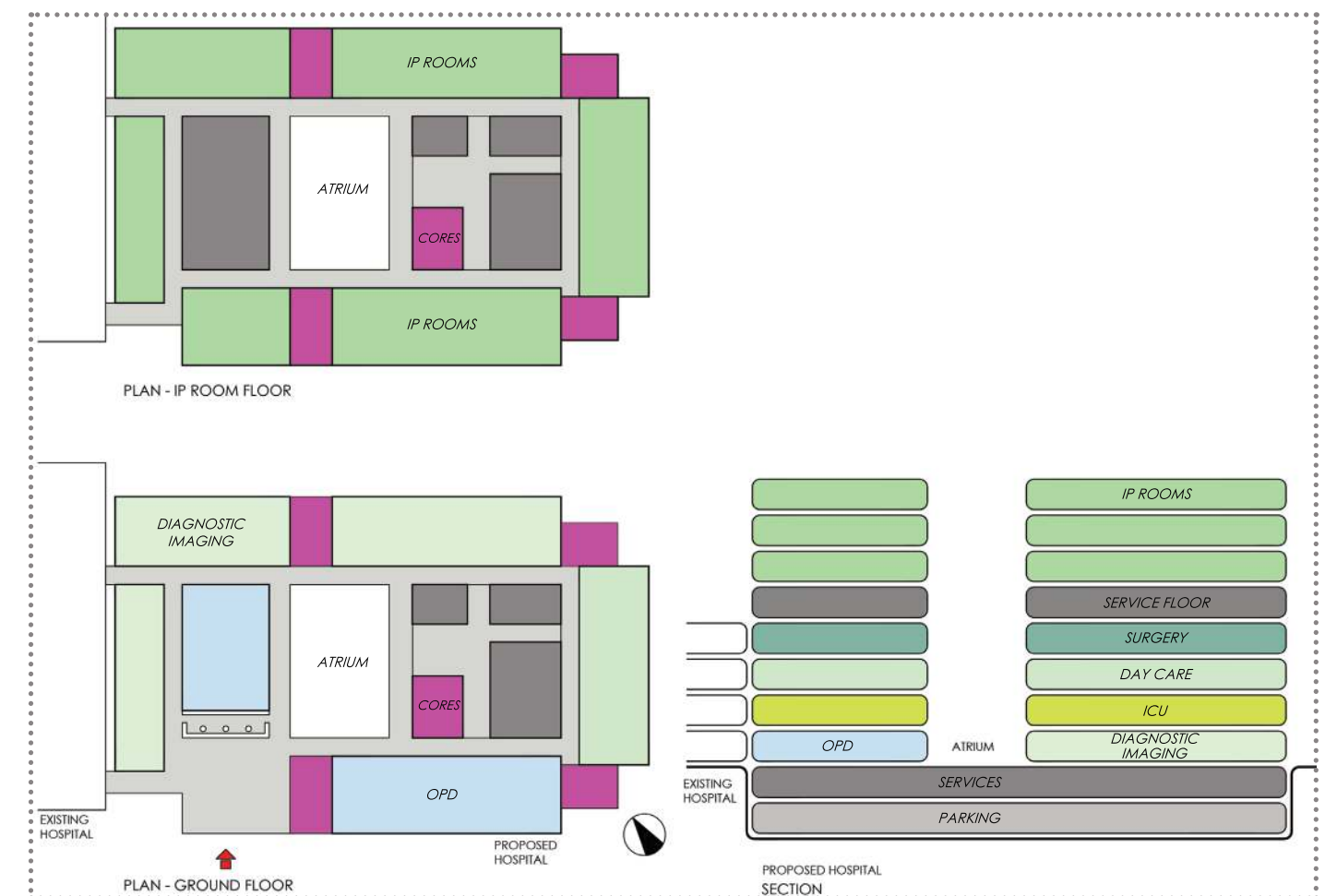
BUA
2,50,000 Sq.Ft

Cost
85 Cr INR (2015)

Floors
10 (2B+G+7)

This project is an expansion for a noble cause of cross-subsiding patient care. A state-of-the-art 300-bed air-conditioned wing was added to an existing 200- bed general hospital for this very purpose. With overgrowing demands, the Trust decided to expand this facility having thrust in Surgical and post-Surgical Care. The new building holds 7 Operating Rooms, Cath Lab, Birthing Suite with NICU, ably supported by 50 ICU Beds and 200 Inpatient beds in single / Double Occupancy configuration. Simple Architecture with minimal maintenance materials like ACP

Structural Glazing and Granite Cladding brings out the elegance of the building. A Glazed Atrium with Poly-carbonate Roof in the Vault shape remains strong source of Natural light for the public corridors. Mechanically ventilated Inboard Toilets allows Inpatient Rooms with maximum natural light. Often the Hospital has a large floor plate and in such cases the rooms on the building periphery gets in natural light. Lift core and utilities like Toilets, CU, DU, and pantry are in the center. Doing this allows patients to be on the periphery and benefit from the natural light.





Top Left
An exterior view with facade giving respect to the regions climate and architecture with local palm tree as landscaped feature

Top Right
Contemporary waiting area



Bottom Left
Corridor with waiting alcoves with carefully selected color palette



Bottom Right
Patient Room with luxurious finishes

6. Emirates Hospital

Location

Dubai

Beds

100

Plot Area

40,000 Sq.Ft

BUA

2,62,000 Sq.Ft

Cost

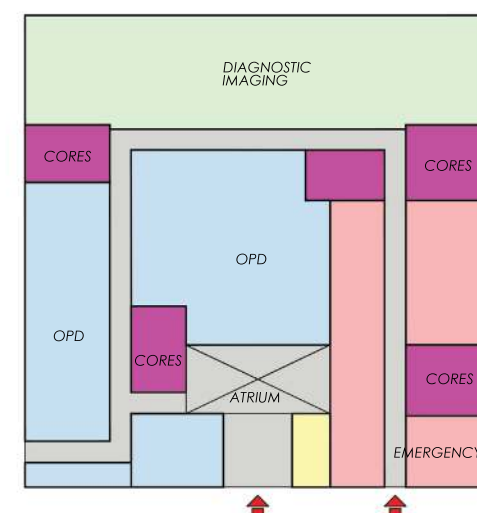
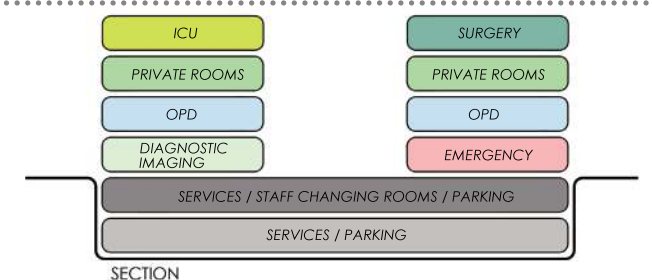
150 Cr INR

Floors

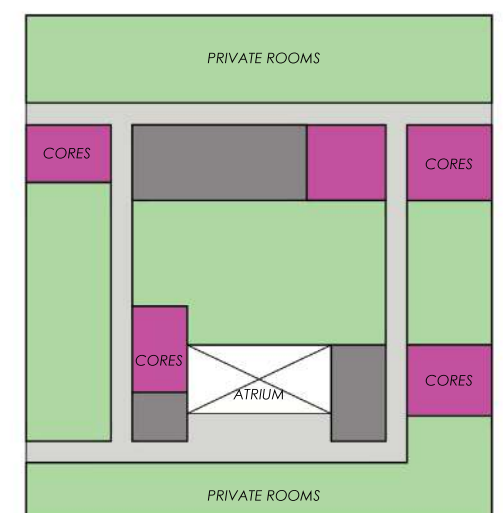
6 (2B+G+3)

Scenically located on Jumeirah Beach Road, the Emirates Hospital is a landmark venture by Emirates Healthcare Company. Contemporary and elegant in outlook, its patient-centric interiors evokes hospitality, warmth, luxury and tranquility. Other than housing an impressive triple height entrance lobby that brings in abundant natural light, there are ample green elements that adds to the appeal of this five-star facility. With a massive floor plate of 40,00 sqft and spanning 6 floors, the project has 2 basements for services and parking requirements. The Ground floor has Emergency

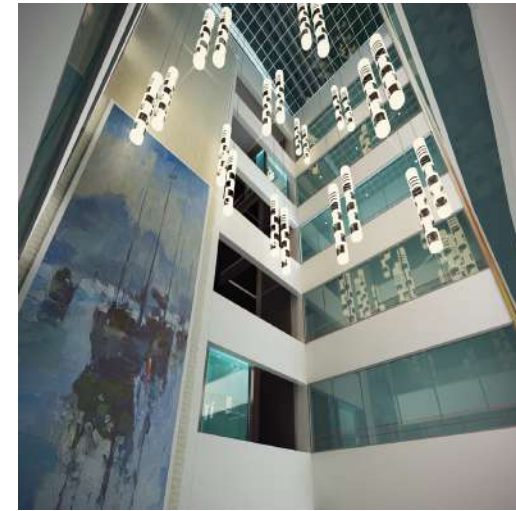
& OPD separated by an atrium with a coffee shop. This Atrium has translucent cover at terrace and act as a light well. Diagnosis strip is placed connecting both the OPD and Emergency. The First floor has Women OPDs like Breast and Gynaec as well as Cardiac OPD, Cath Lab. & CCU. Second Floor constitutes of Private Rooms the topmost floor houses Surgery & ICU as its AHUs can be placed on terrace above. The central Atrium brings natural light to the interior portion of the floor plate.



PLAN - GROUND FLOOR



PLAN - IP ROOM FLOOR



Top Left
Atrium to bring in natural day light with decorative light fixtures for night time

Top Right
Main Gate Structure



Bottom Left
Reception with sturdy yet attractive flooring and false ceiling

Bottom Right
Lobby with contemporary furniture

7. Excelcare Hospital

Location
Guwahati, India

Beds
180

Plot Area
2,00,000 Sq.Ft

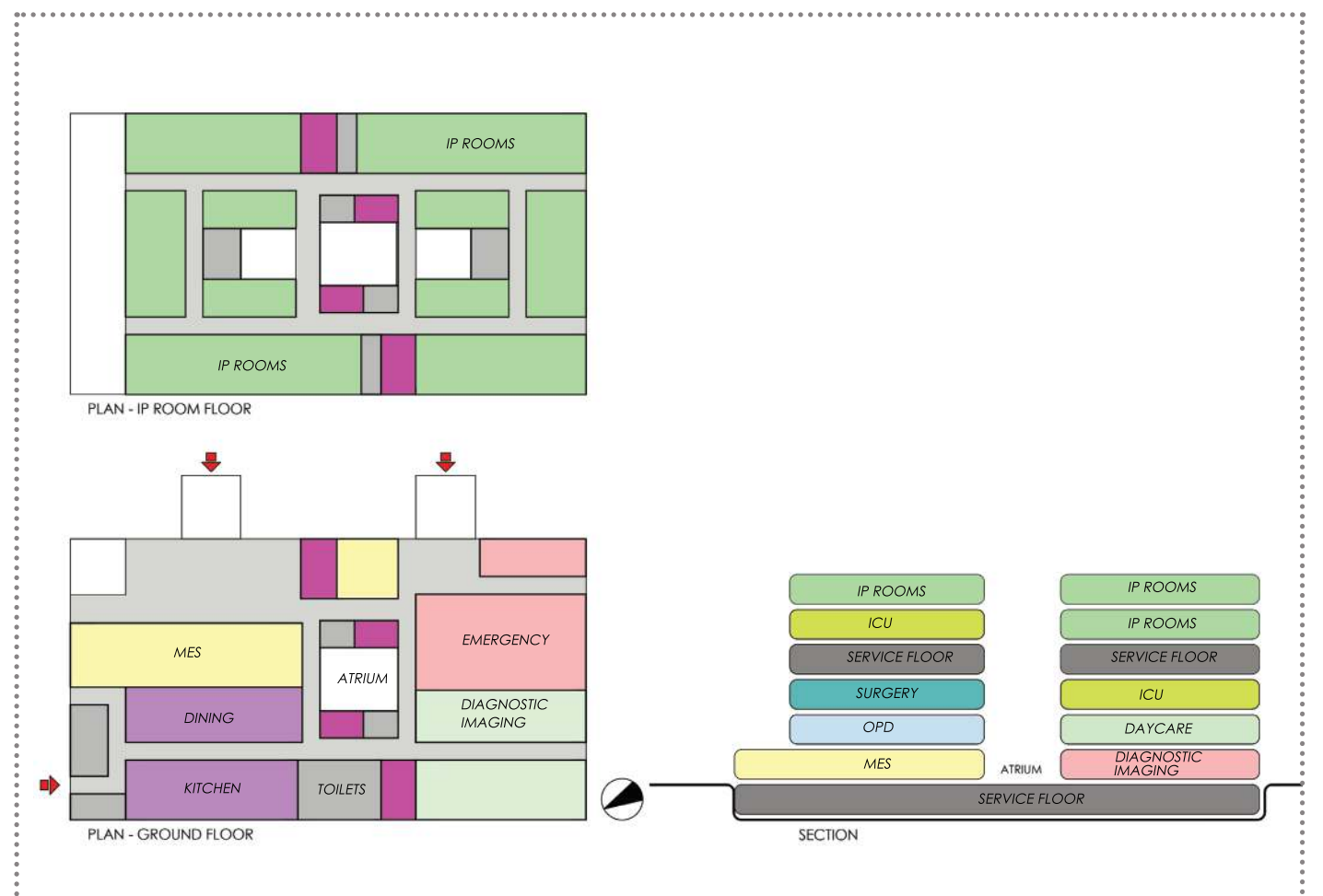
BUA
1,80,000 Sq.Ft

Cost
70 Cr INR (2017)

Floors
7 (B+G+5)

This project is a Vastu compliant Hospital project. The building has a rectangular floor plate where main Entry inside the building is taken from North-East and at the center “Brahma” which is the central “Nabhi” is left open in form of an atrium which also draws natural light into the building. There is a small garden created in North-East to make the corner light as desired by Vastu. A low level terrace is placed at upper level towards North side so that the South side building mass becomes taller than North side. Underground Water tanks are kept at North-East Corner. Couple

of ventilated courts are introduced at upper level to bring natural light for IP Rooms. Cores are smartly placed in order to minimize the travel distance at all floors. There are 2 distinct entrances at Ground level for General and Emergency purpose. The ground floor consists of Medical Entrance Service, Emergency, Radio diagnosis, Kitchen & Dining. Radio diagnosis which have heavy equipments is kept towards South side. Standard structural grid of 7.5 m by 7.5 m is considered which is design as well as construction friendly.





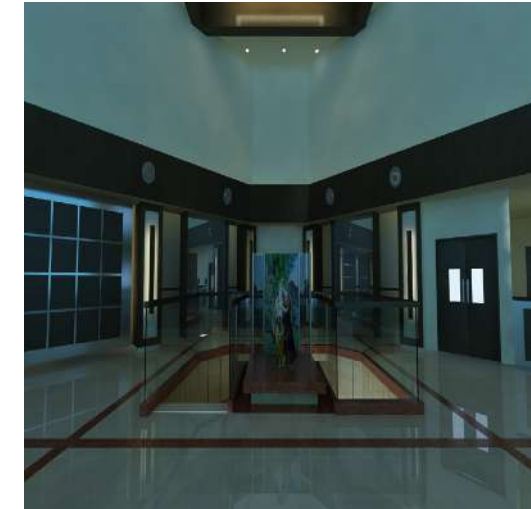
Top Left
Inviting reception
designed specially to
cater to the needs of
patients as well as staff



Top Right
Lobby with enough
day light intake to save
electricity bills



Bottom Left
Inpatient room floor
waiting area and corridor



Bottom Right
Lobby with bold and
sturdy finishes

8. ILS Hospital

Location
Agartala, India

Beds
170

Plot Area
1,70,000 Sq.Ft

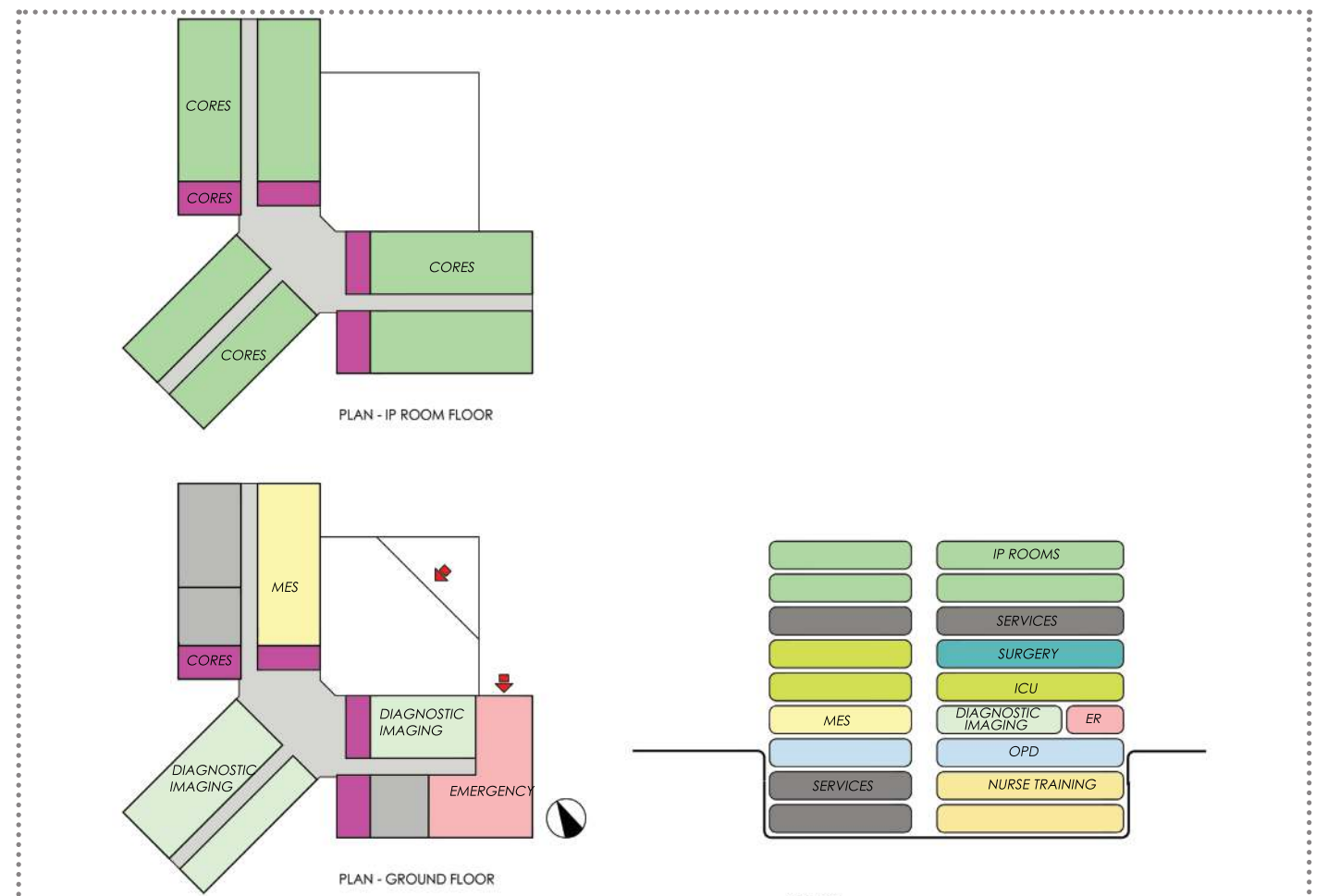
BUA
1,80,000 Sq.Ft

Cost
45 Cr INR (2009)

Floors
9 (2B+G+6)

Its always wise to plan the cores in such a way that the circulation within the Hospital becomes minimum. ILS is a project where the design allowed for a very compact and minimal circulation need. The floor plate is designed as a “Y” shaped 3 arms with a central “node” where these 3 arms unite. It is at this nodal point where the lifts and staircases are placed so as to make the movement super-efficient, less travel times, less construction cost and less cost to illuminate and ventilate the smaller circulation path. There is one more advantage of this “Y” shaped floor plate. The external

periphery is greatly increased which allows all the rooms to get an external building surface for taking in natural light and ventilation. This helps in patient and staff wellbeing, recovery, helps in energy saving and eventually reduce the bills too. A nursing college is also integrated within the Hospital building. This helps prepare the nurses by giving them training and nearby practical experience. In this model the hospital can also absorb the nurses at the completion of their training so this makes a win-win situation for everyone. Interestingly, the top 2 floors are Inpatient room floors.





Top Left
Lobby with sufficient waiting and double heighted space to give a volume to the space



Top Right
Smartly designed island style OPD Waiting



Bottom Left
Pleasant finishes of HR and nursing dept.



Bottom Right
Private Patient room with adjoining window for a view and a couch for the relative

9. Narayana Health Hospital

Location
Gurugram, India

Beds
211

Plot Area
1,20,000 Sq.Ft

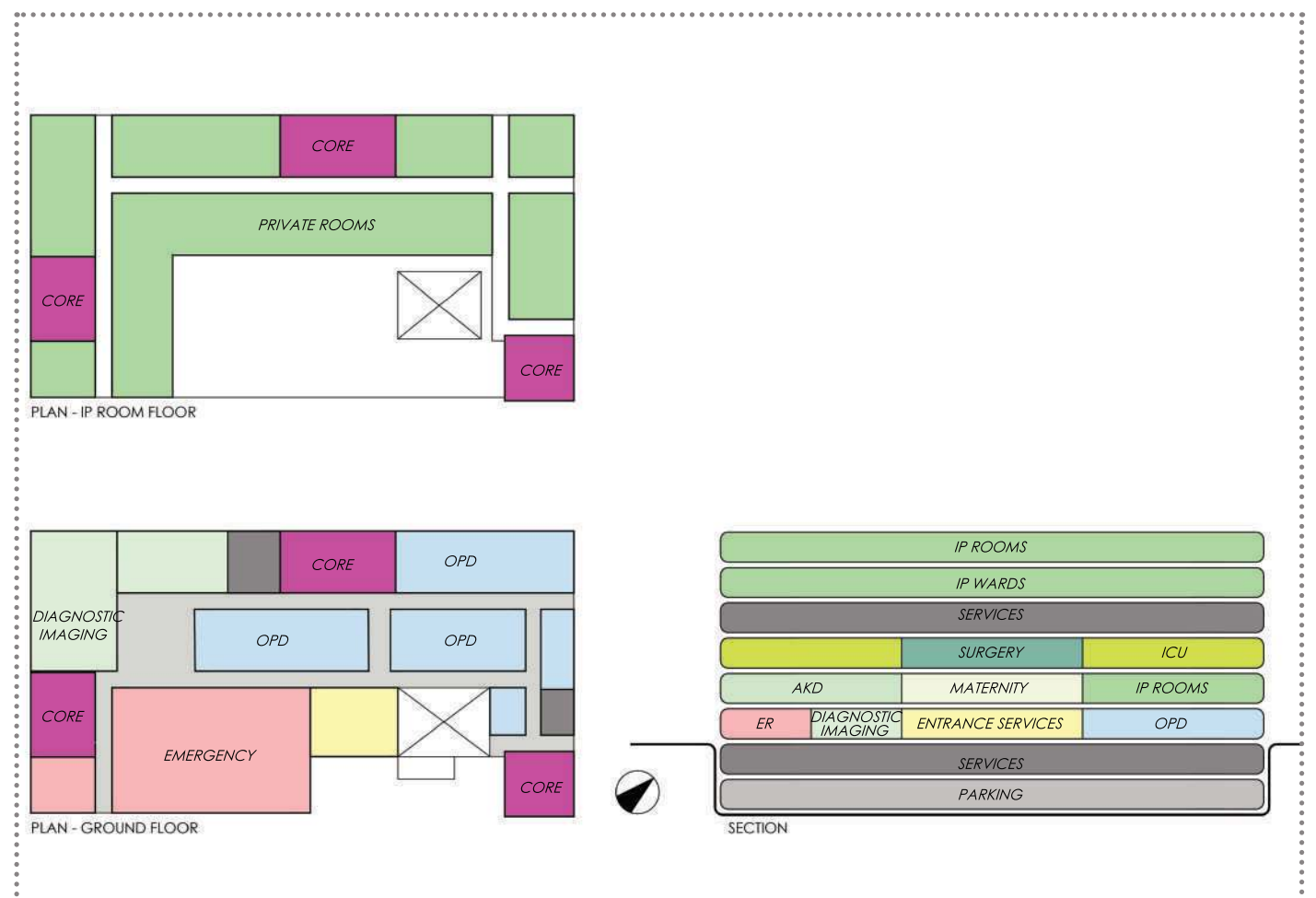
BUA
1,20,000 Sq.Ft

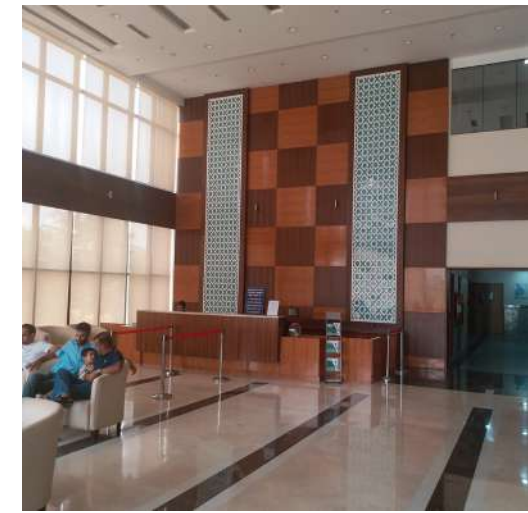
Cost
70 Cr INR (2017)

Floors
7 (B+G+5)

Nestled close to DLF Cyber City and the Delhi - Jaipur Highway, Narayana Superspeciality Hospital is a NABH accredited world-class medical facility catering to the healthcare needs of the NCR region. Featuring experienced medical professionals and the latest in medical infrastructure, the hospital represents Narayana Health's commitment to quality medical care and patient service. Narayana Superspeciality Hospital, Gurugram, has been built from the ground-up to be a state-of-the-art facility; with expertly planned and well-equipped sections, including spacious OPD

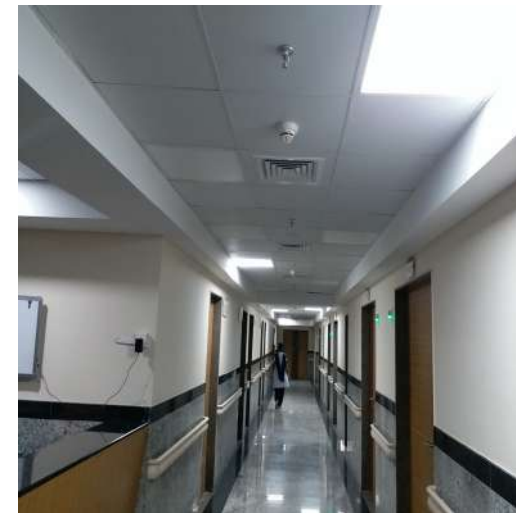
areas and comfortable patient rooms which allows the hospital to cater to both In-Patients and Out-Patients in equal measure. The world-class medical equipment and infrastructure at the hospital ensures that it can provide a wide range of treatments; from complex to routine, and from paediatric to adult, ably supported by a state of art radiology unit with MRI, CT scan and Ultrasound services. Narayana Superspeciality Hospital, Gurugram has more than 30 streams of clinical specialities. The hospital has 211 operational beds with world-class intensive care units.





Top Left
Operation Theatre
with ceiling suspended
essentials to keep
the floor clean

Top Right
Main lobby with double
height for volume
and reception with a
back wall, waiting and
sturdy low maintenance
materials



Bottom Left
Corridor with stone
cladding and guard rails
for safety and
long lasting

Bottom Right
Patient room with
veneered head wall and
bright finishes

10. Paras JK Hospital

Location
Udaipur, India

Beds
200

Plot Area
46,000 Sq.Ft

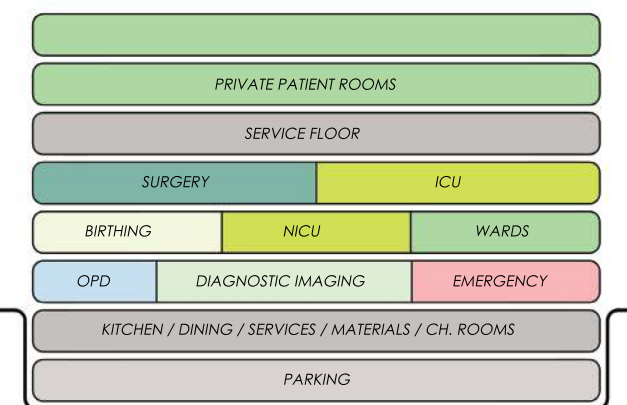
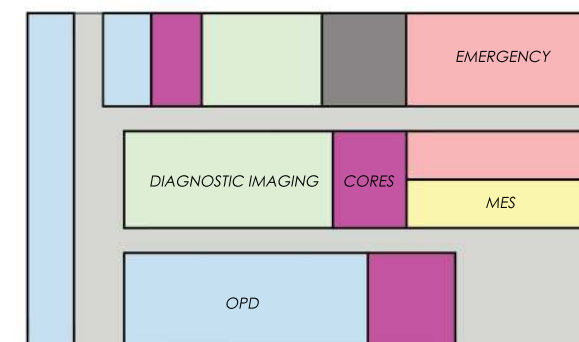
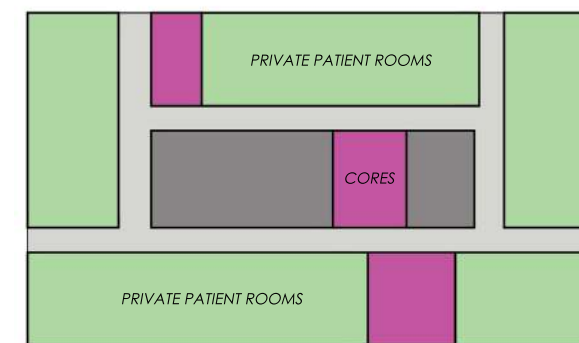
BUA
1,50,000 Sq.Ft

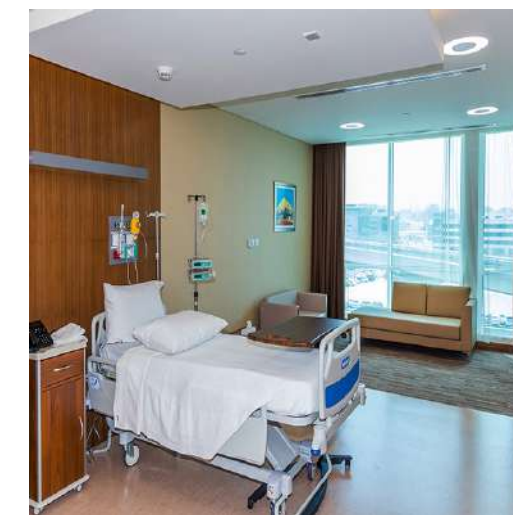
Cost
65 Cr INR (2017)

Floors
7 (B+G+5)

Paras Hospital is a best example of a hospital planned on a very compact site. Here the site area was a little more than an acre. With a modular grid of 8m, we planned 4 x 7 grids and a floor configuration of two basements & Ground plus 5 more floors spreading up all the required facilities in these 8 floors. The Ground floor has separate entrances for General Public and Emergency towards the approach road side for easy navigation and visibility. The ground floor also has Diagnostic Imaging and OPD.

The OPDs are clustered with island waiting areas. First floor has birthing, NICU & wards. Surgery and ICUs are kept on 2nd floor and hence the third floor has been kept as a service floor for containing the AHUs of the OTs and ICUs below. Private patient rooms are kept on 4th & 5th floors.





Top Left
Lobby with striking artwork and furniture with escalator to positively welcome the visitors

Top Right
State-of-the-art OT with vibrant and engaging graphics

Bottom Left
OPD waiting with minimal and stylish furniture

Bottom Right
Comfortable & private patient rooms for sufficient space for patient as well as relative. Full height windows allow for maximum view and natural light intake

11. Prime Hospital

Location

Dubai

Beds

100

Plot Area

23,680 Sq.Ft

BUA

1,50,000 Sq.Ft

Cost

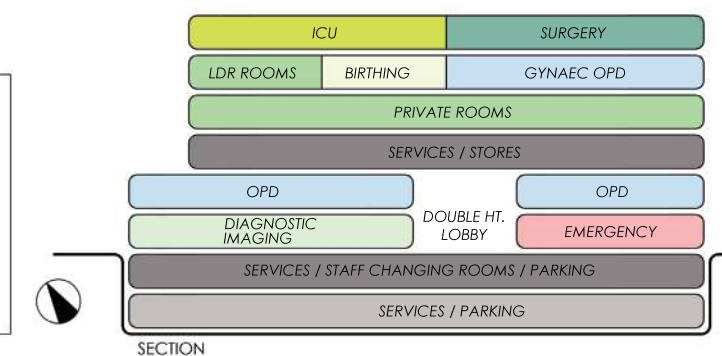
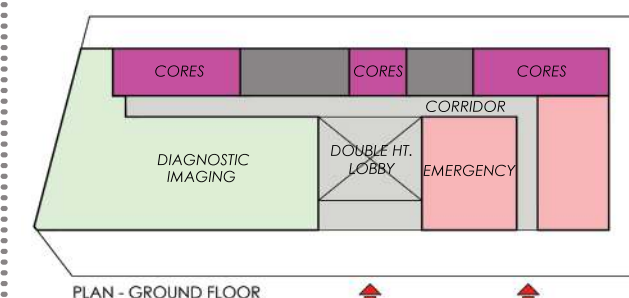
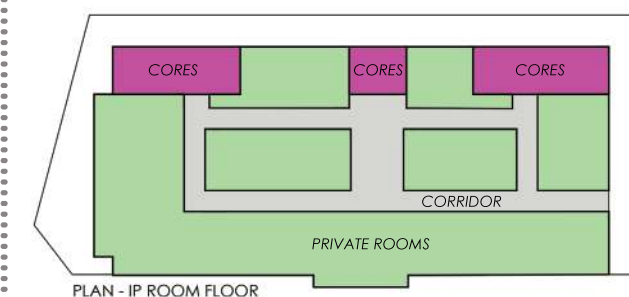
75 Cr INR

Floors

8 (2B+G+5)

Overlooking one of the world's busiest airports, Prime Hospital interiors are purposefully designed to be peaceful and homely. This is successfully achieved with abundant natural lighting, carefully selected earthy tones, and bright murals specked throughout the clinical spaces. The facility has been developed in compliance with JCI as well as US FGI 2015 Standards. Prime Hospital's aesthetic and patient-friendly interiors have been designed in accordance with the American Institute of Architects Hospital Architecture (AIA) guidelines and purpose-built as per

International Quality Accreditation Standards. Prime Hospital has been proven to raise the international standard of quality of care ensuring our patients to receive the best healthcare treatment to its patients and strive to meet the international standards in healthcare services in the Emirate as part of Dubai Health Strategy 2021. Prime Hospital is also a member of the Dubai Medical Tourism Club (DMTC). Spreaded across 6 floors over 2 basements, it houses services and parking in the 2 basements. Ground floor consists of Emergency and Imaging. Escalators connect the OPD on 1st Floor.





Top Left
Separate waiting for male and female in OPD with warm and pastel finishes for wall, flooring and furniture

Top Right
CT with art ceiling to keep the patient engaged positively and help remove his fear



Bottom Left
"Therapeutic garden" for relaxation and holistic recovery of in-patients



Bottom Right
Luxuriously furnished private patient rooms

12. Thumbay University Hospital

Location

Ajman

Beds

350

Plot Area

3,10,000 Sq.Ft

BUA

2,80,000 Sq.Ft

Cost

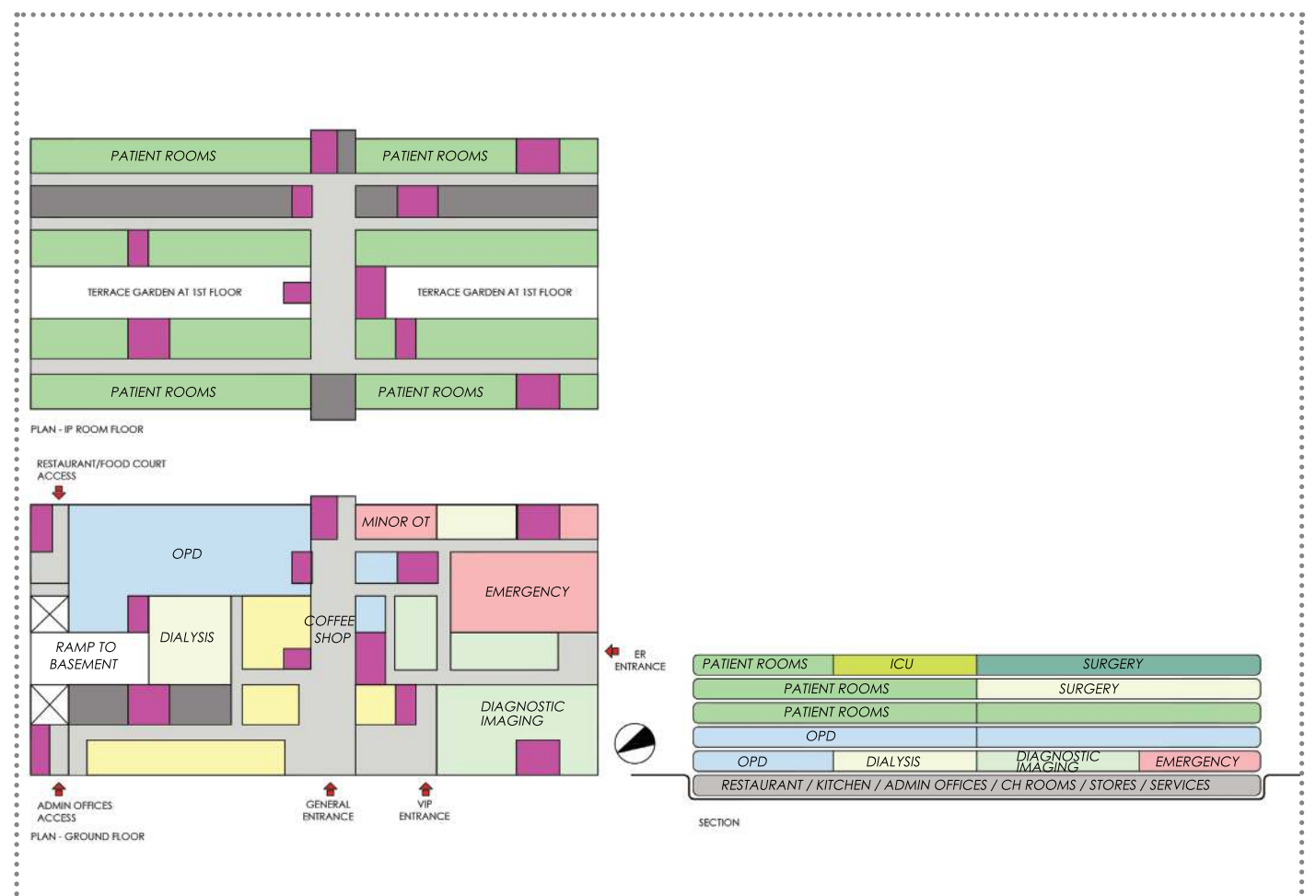
Confidential (2019)

Floors

6 (B+G+4)

Thumbay University Hospital is a part of the Thumbay Medicity and is the largest private academic hospital in the Middle East region, with 350 beds. The Hospital has a dedicated floor for the Mother and Child program including 10 Labor & Delivery Rooms, NICU, SCBU and Well Baby Unit. The hospital offers Marhaba Services – personalized fast track services for patients – as well as Presidential Suite Rooms, VIP Rooms, Private Rooms etc. With over 100 consultation clinics, equipped to treat 3000 + outpatients daily. It's a beautifully designed hospital and one of its kind in the

country. OT has an in-house viewing gallery for students to observe live Surgeries. The hospital has a 'Therapeutic Garden' for better relaxation and holistic recovery of in-patients. It has state of the art robotic pharmacy so as to ensure more accuracy and less waiting. Dedicated separate entrances for Admin and restaurant / food court. Amenities for patients and visitors include a multi-restaurant food court, movie theatre, coffee shops, health club, 1000+ free parking spaces and an adjoining mosque etc. It is built to be a futuristic hub for medical education, healthcare & research.



T H A N K Y O U

HOSMAC

PERFECTING HEALTHCARE

120, Udyog Bhavan, Sonawala Lane, Goregaon (East),
Mumbai – 400 063, Maharashtra, India
Phone Number: +91 22 6723 7000 www.hosmac.com